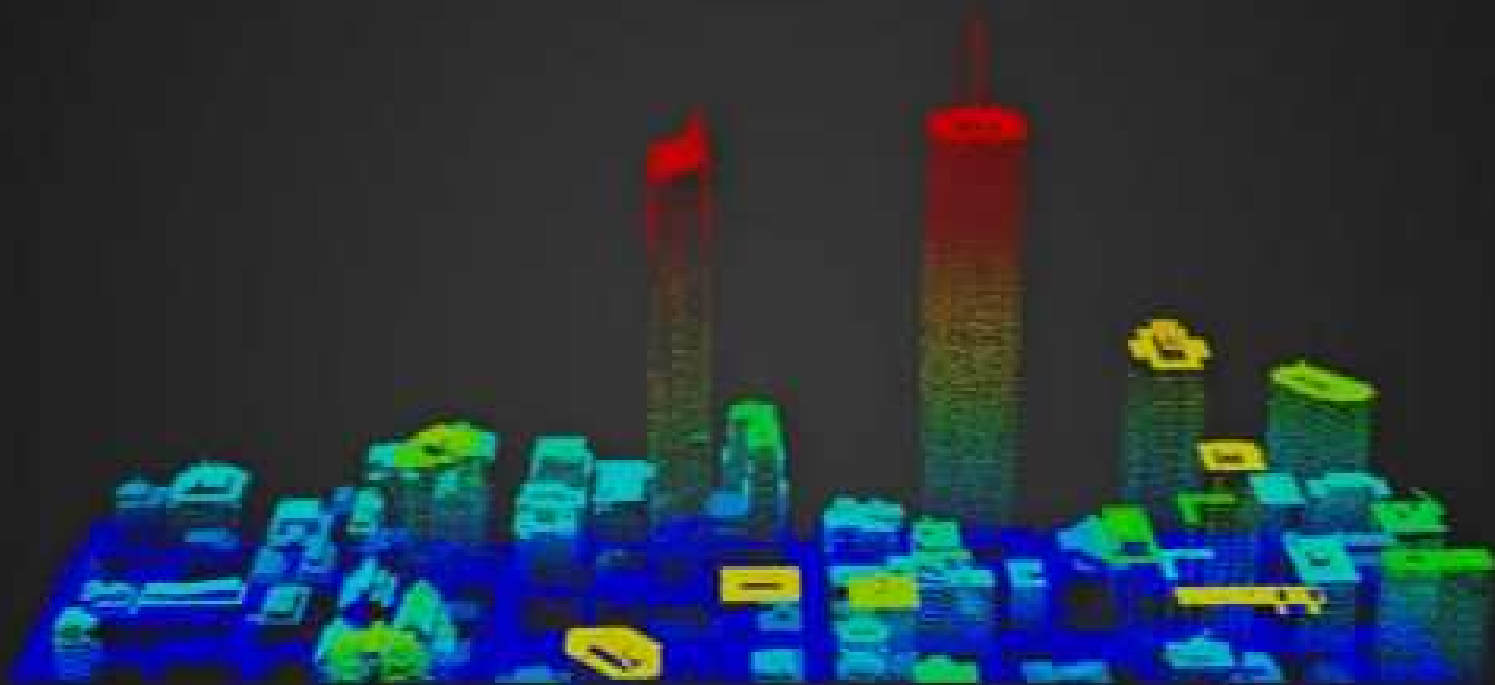


Quick Terrain Reader⁸

Free companion software to Quick Terrain Modeler



Please visit www.appliedimagery.com for Quick Terrain Modeler upgrade information.

©2003 Johns Hopkins University Applied Physics Laboratory. All Rights Reserved.

APPLIED IMAGERY

Quick Terrain Reader 8

- Excellent viewer that enables quick control of point size, color, vertical exaggeration.
- Controls are a little different than CAD, but you get used to them.
- The software is the free companion to Quick Terrain Modeler. This is a fairly powerful program for QAQC, classifications and a bunch of other stuff.
- Some data can be pulled from free data through RIGIS and other sources.



- Special Overlays
- Models
- Vectors
- Markers
- Routes
- Textures
- Bookmarks
- Movies

Quick Terrain Reader⁸

Free companion software to Quick Terrain Modeler

Please visit www.appliedimagery.com for Quick Terrain Modeler upgrade information.

©2003 Johns Hopkins University Applied Physics Laboratory. All Rights Reserved.

APPLIED IMAGERY

To Load a File

- Drag and drop.
- Double click
(although version 8.5 seems to have issues with file associations or this machine caught a gremlin.)
- Use the File – Open dialogue. (See video)

Quick Terrain Reader

- Provides statistics about the clouds (models) when you use File – Open or when you select the menu item. (See video)

Quick Terrain Reader

- There are some viewing options:
 - Color based on height with different palettes.
 - Color based on intensity (reflectivity).
 - Color not based on anything (all is white).
 - Color based on actual colors (spoiler).
 - [\(See video\)](#)

Quick Terrain Reader

- Is there a use?
- Yes.
- Bring in a cloud and convert the vertical exaggeration by 3.28083333333333333333333333333333 (exactly!) or by 3.28, it'll be close enough.
- Even when the readout states the elevation is in meters, you and I know better, it is in feet.
- The horizontal is still in meters, so everything seems a bit taller.
- [\(Play Video\)](#)

Files

- I have finally setup an FTP Server at my office.

[Www.ese-llc.com/contact/](http://www.ese-llc.com/contact/)

See the link for FTP? Click it.

Or if you like numbers: ftp://75.150.76.58

- Username: **RISPLS**
- Password: **Newport**
- Sample files on SPCS in color of places in Rhode Island.
- Links to the Viewer Programs.